

# Agenda Item 4 WCPO Bigeye TRPs

WCPFC BMW1  
Online

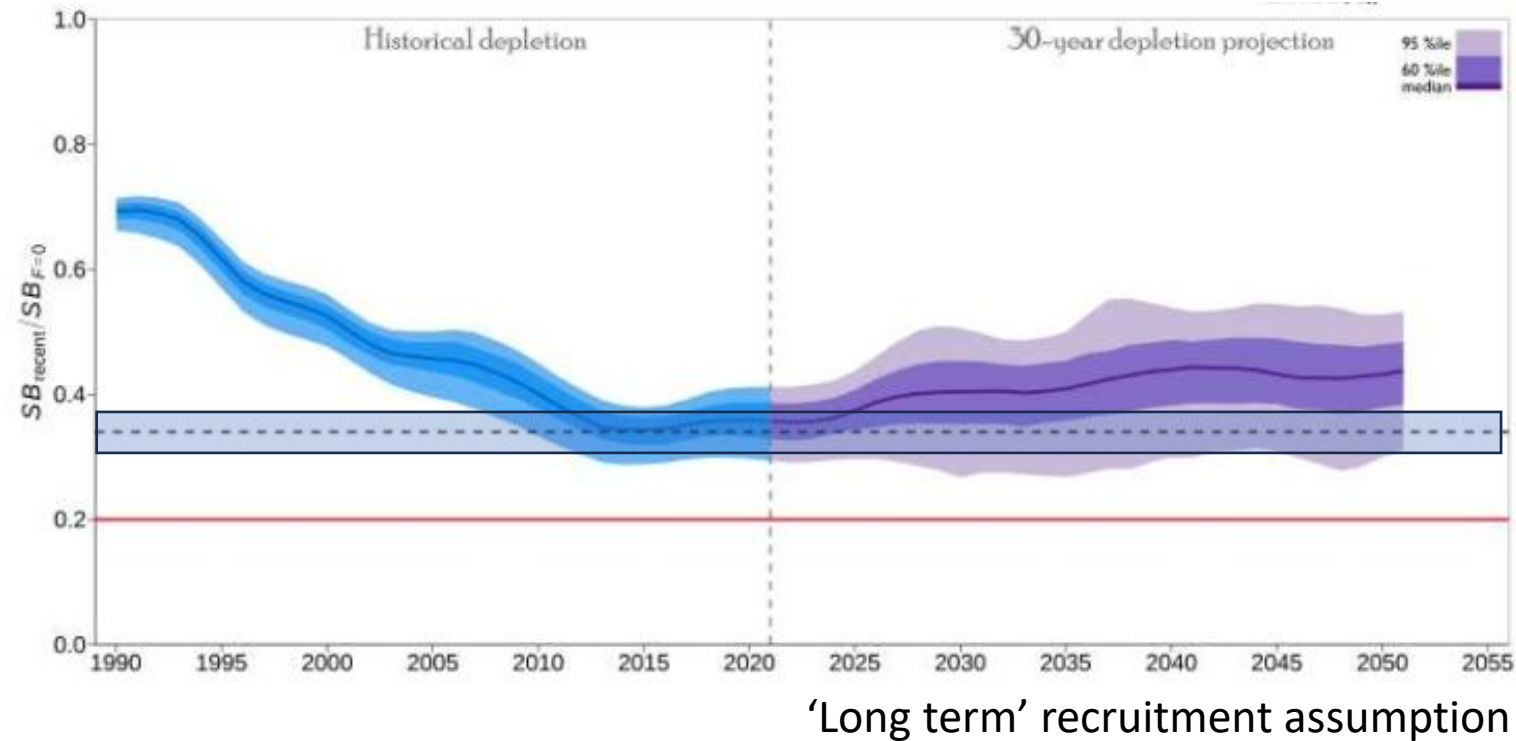
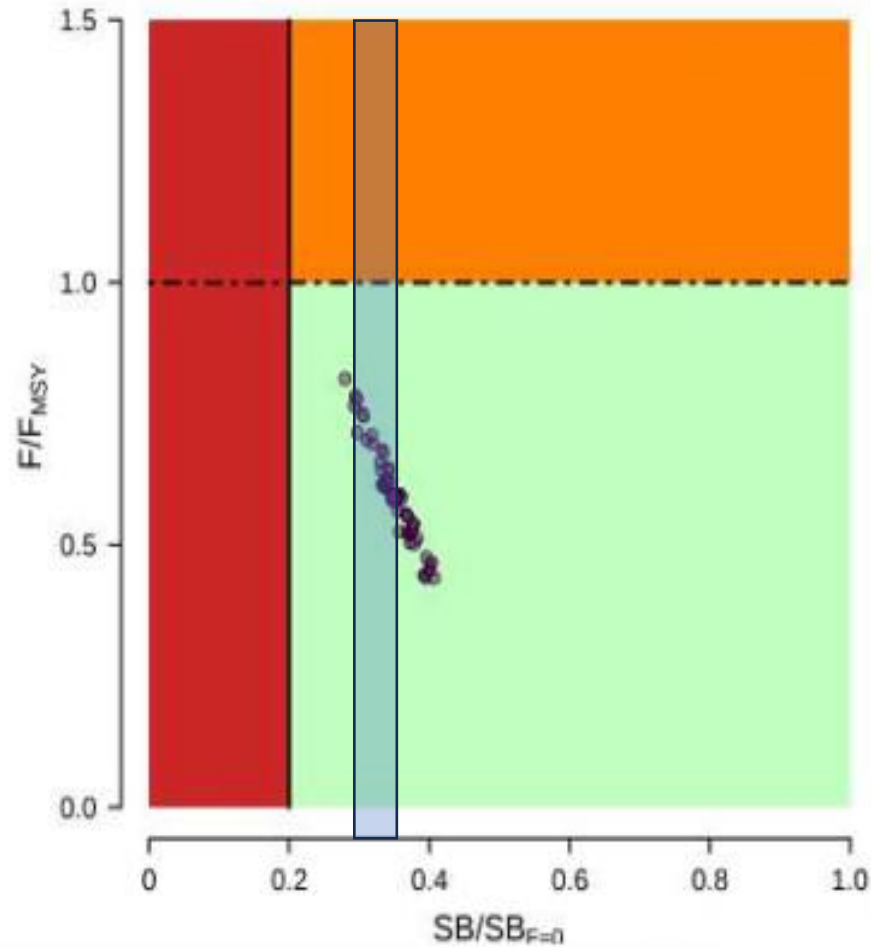
SPC-OFP  
20-21 May 2026

# Introduction

---

- WCPFC21 (summary report para 433-434) stated - Candidate BET TRPs are specified as follows:
  - a) 2012-2015 average spawning biomass depletion (currently estimated at  $34\%SB_{F=0}$ )
  - b)  $0.94 \times$  2012-2015 average spawning biomass depletion (currently estimated at  $32\%SB_{F=0}$ )
  - c)  $1.06 \times$  2012-2015 average spawning biomass depletion (currently estimated at  $36\%SB_{F=0}$ )
  - [these] may in future be specified as threshold targets for which associated probabilities of being 'at or above' would need to be specified.
- WCPFC22 maintained these three TRP levels

# Status from 2023 assessment



'Long term' recruitment assumption

- CAVEAT – based on the 2023 stock assessment, outcomes under agreed OMs may be different

# Vulnerable biomass

BET: long-term recruitment		Bigeye vulnerable biomass (rel. 2019-2021 average)	
Median depletion level (%SB <sub>F=0</sub> )	Change in SB (%SB <sub>F=0</sub> ) from 2012-2015 average	'Tropical' longline	'Southern' longline
0.36	+6%	Down ~38%	Up ~36%
0.34	0%	Down 44%	Up 32%
0.32	-6%	Down 52%	Up 25%

WCPFC21-2024-31 Table 5 (BET long term recruitment)

- CAVEAT – based on the 2023 stock assessment, outcomes under agreed OMs may be different (VB being considered as a PI)

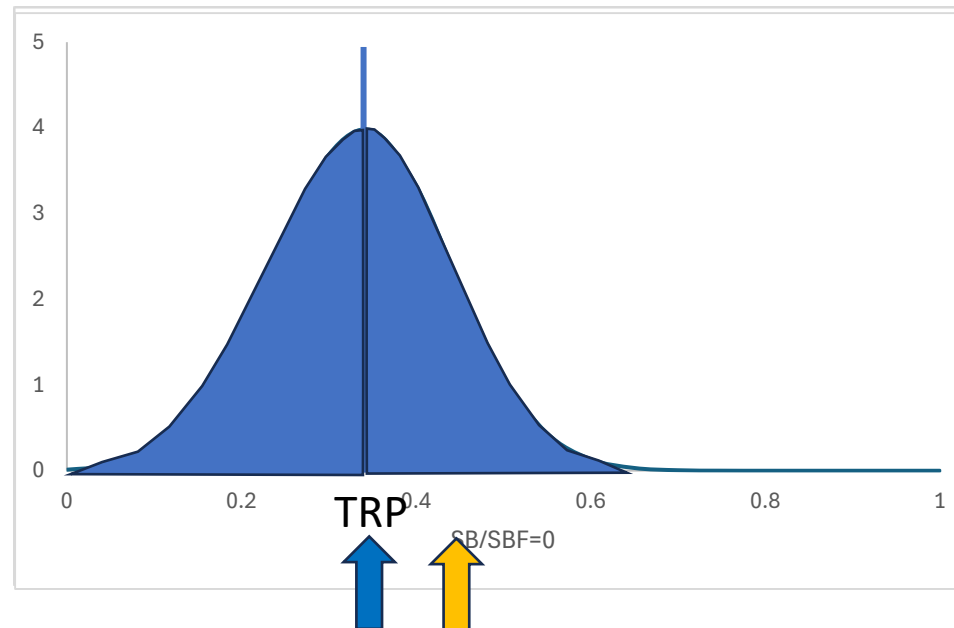
# Note

---

- Candidate TRP levels are relatively close together
  - Differences for some PIs across this range may be small

# Threshold TRPs

- ‘Threshold’ TRPs
  - ‘target’ achieved on average, ‘threshold’ to remain above with a specific probability
  - Status of TRP needs manager’s clarification
    - Specify the probability of being ‘at or above’



50% below,  
50% above  
70% above

# BMW1

---

- Decision points
  - Whether the defined bigeye TRPs are actual targets or are to be considered as thresholds.
  - If the bigeye TRPs are to be considered as thresholds, specify the probability that the spawning biomass depletion should be maintained above the thresholds.
- For example:
  - Threshold TRP with [at least] 70% probability of remaining above  $34\%SB_{F=0}$